



# Glass Reinforced Cement GRG, GRP

## Glass Reinforced Concrete (GRC)

GRC as a cladding material has aesthetic properties, durability, impact resistance, ease of installation, versatility and overall weight savings on the structure.

The use of GRC as a cladding and facade material is rapidly increasing as it provides architects with high quality, aesthetically pleasing appearance and contractors with a cost effective solution.



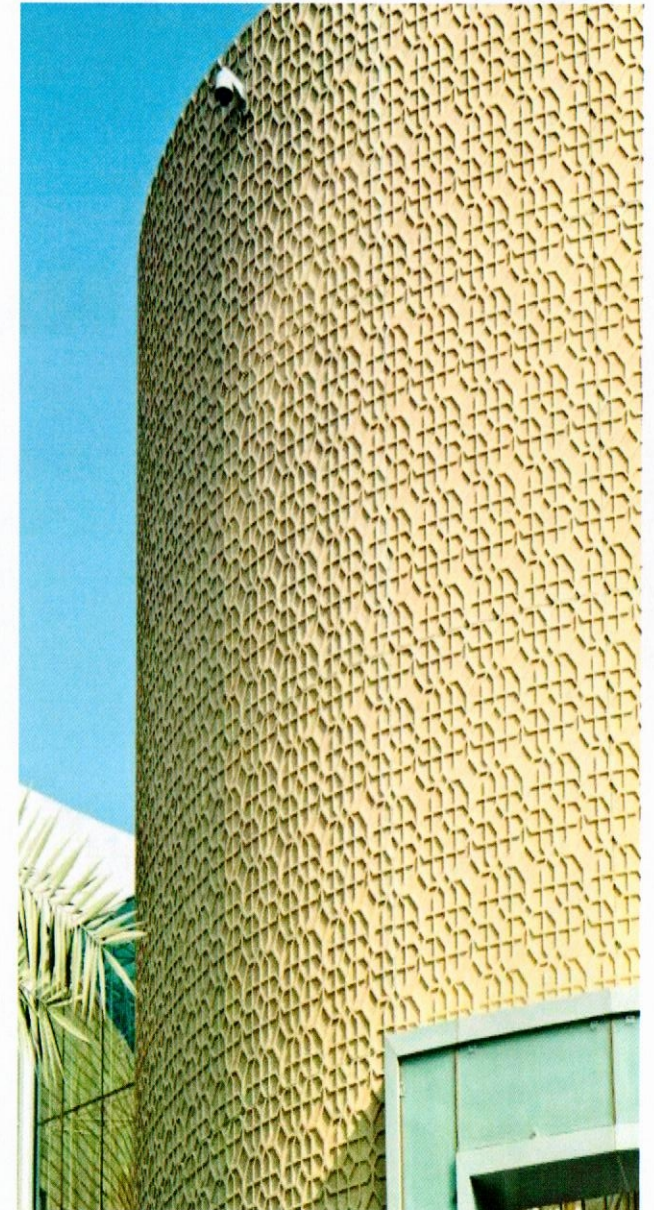
---

## Glass Reinforced Concrete (GRC) - ADVANTAGES

GRC has a number of advantages over natural and alternative cladding materials. The main advantage being weight as this offers substantial savings on the structure, installation time, on-site mechanical handling equipment etc.

GRC panels are custom made to suit project requirements. Another of it's major advantages is its ability to form different shapes and patterns when detailing bespoke panels or architectural features since each individual element is produced from a mould.

GRC, being cement based has excellent durability, high compressive and impact strength, non-corrosive and has high fire resistance.



## Glass Reinforced Concrete (GRC) - PRODUCTS



**GRC Boundary Walls**



**GRC Balustrades**



**GRC Cladding Panels**



**GRC Columns & Capitals**

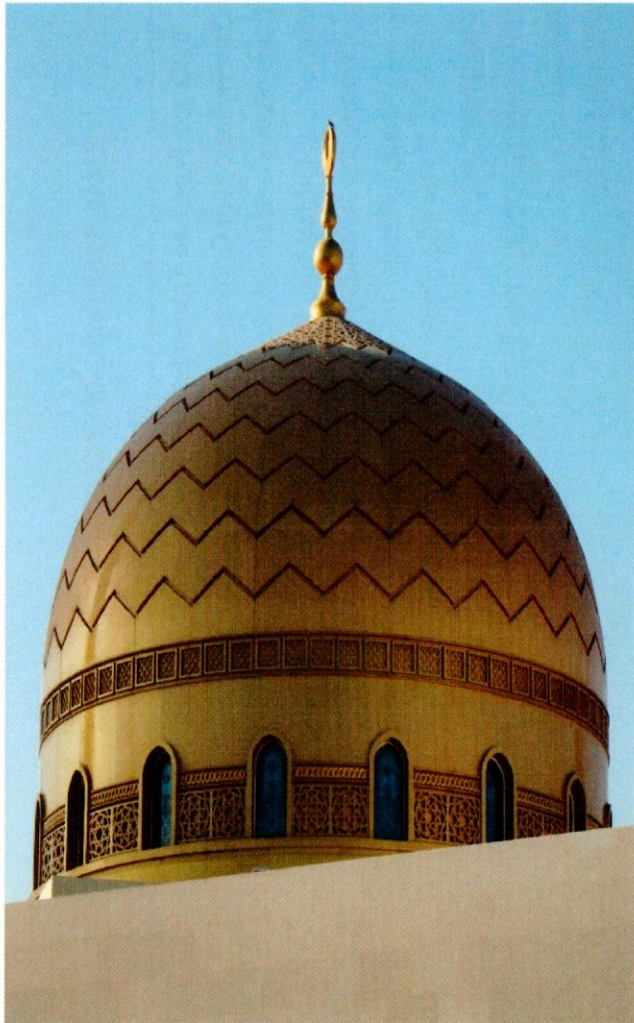


**GRC Cornice**

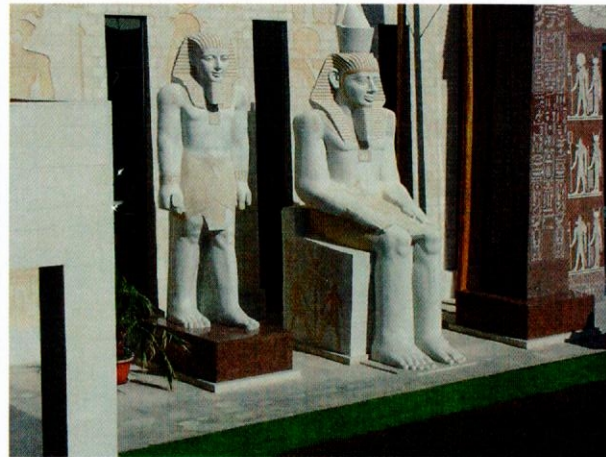


**GRC Screens / Mashrabiya**

## Glass Reinforced Concrete (GRC) - PRODUCTS



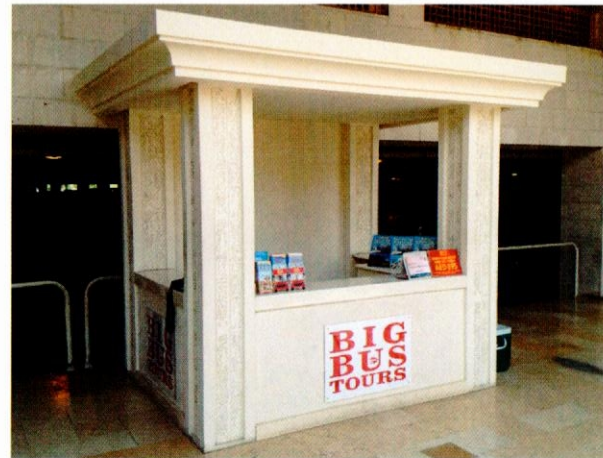
**GRC Domes**



**GRC Architectural Moulding**



**GRC Ceilings**

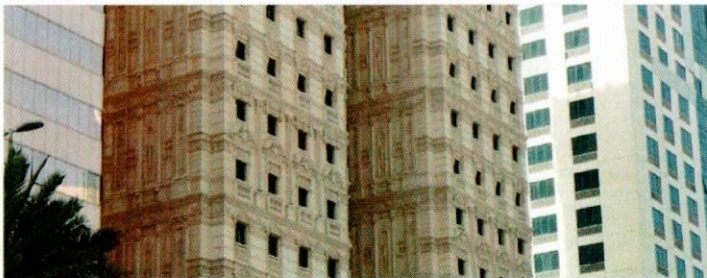


**GRC Kiosks**

# Glass Reinforced Concrete (GRC) - PRODUCTS

PROJECT REFERENCE  
GRC

AL KHALEEJ TOWER, ABU DHABI



PROJECT REFERENCE  
GRC

Electra Tower, Abu Dhabi



PROJECT REFERENCE  
GRC

MINISTRY OF FINANCE, DUBAI



PROJECT REFERENCE  
GRC

JUMERIAH TOWER, DUBAI



# Glass Reinforced Concrete (GRC) - PRODUCTS

PROJECT REFERENCE  
GRC

KHALEEFA TOWER, ABU DHABI



PROJECT REFERENCE  
GRC

AIRPORT FREEZONE, DUBAI

